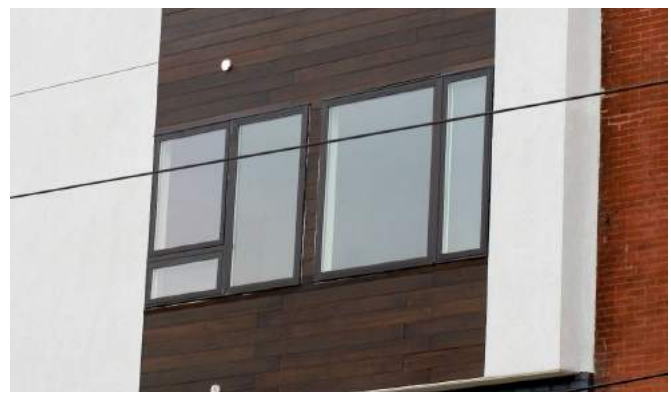
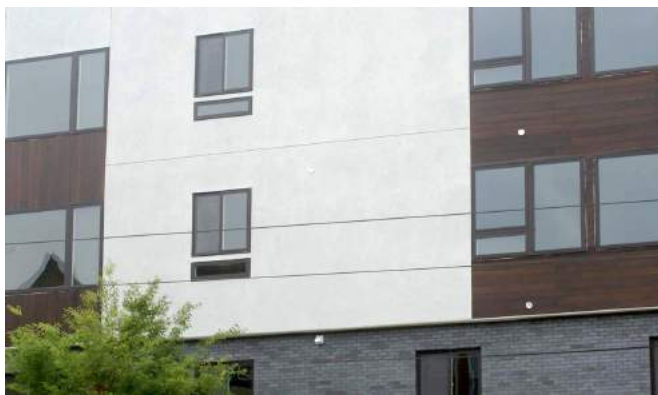
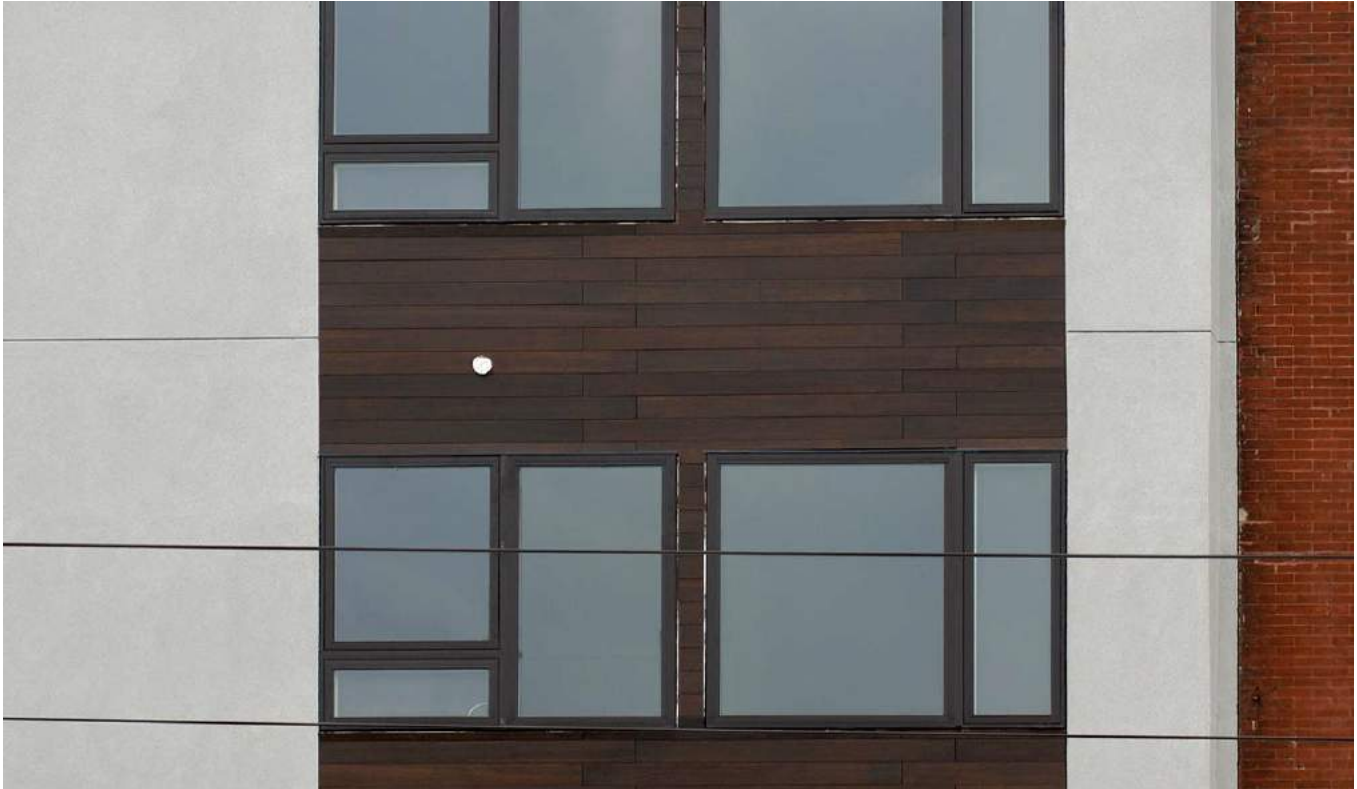


JAMES MORRISEY TURNKEY | PENNSYLVANIA, USA

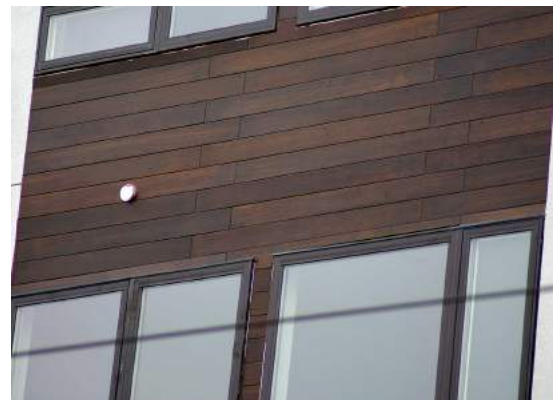
PROJECT PROFILE



JAMES MORRISEY CONSTRUCTION

OUTSIDE BAMBOO RAINCLAD SIDING

architect:
builder: **James Morrisey Inc.**
dealer:
location: **Pennsylvania**
client: **Private Residence**
designer:
product: **dassoXTR Fused Bamboo[®] RainClad Siding**
quantity: **1500 sqft**
date: **11/11/2018**
links:





FUSED BAMBOO® SIDING

The dasso Group, based in Hangzhou, China, has been the world's leader in innovative bamboo products for more than two decades. With 10 manufacturing facilities, over 1,000 employees, a Design and Research Center, and over 40 patents to date, dasso's mission is in to advance the innovative use of bamboo throughout the world.

AVAILABLE IN 2 COLORS

ESPRESSO **COGNAC**

PATENTED: CHINA, RUSSIA, AUSTRALIA, USA, EU, MALAYSIA, SINGAPORE

RESIDENTIAL SIDING

■ **XTR-SID18-178TG-PP**
 ■ **EPC-SID18-178TG-PP**
 1" x 6" T&G Rainclad Siding
 3/4" x 5-3/8" x 72" Pre-Primed
 18 x 137 x 1829mm

■ **XTR-SID18-137TG-PP**
 ■ **EPC-SID18-137TG-PP**
 1" x 7" T&G Rainclad Siding
 3/4" x 5-3/8" x 72" Pre-Primed
 18 x 137 x 1829mm

TECHNICAL HIGHLIGHTS

- » Unsupported end-match joint has a span rating of 100 psf.*
 *Per ASTM D7032 over 16" framing
- » Class A fire rating per ASTM E84.
- » More dense than Ipe.¹

DESIGN FEATURES

- » Can stain to a variety of colors using our XTR Guard system.
- » The look and feel of a natural wood product. Performs like dense tropical hardwoods.
- » Offers the consistent quality of a manufactured composite product.

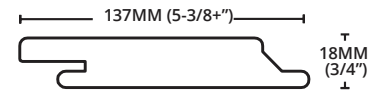
INSTALLATION BENEFITS

- » Available pre-primed for subsequent on-site topcoating.
- » Side-grooved for hidden fastening or can be face-screwed with screws exposed or plugged using dasso.XTR plugs.
- » Decking is 6' long and end-matched for installation on the joist (on 12"/18"/24" centers) or by coverage method off the joist on 16" centers.
- » Less time, less labor, less waste and easier installation.

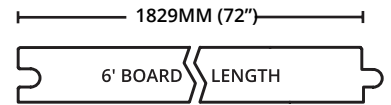
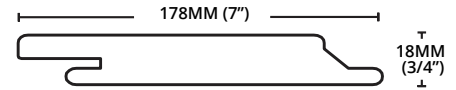
COMPARISON CHART

SKU	dassoXTR Espresso	dassoXTR Cognac	Ipe/Brazilian Walnut	Meranti Batu	Western Red Cedar
Density lb/ft ³ (kg/m ³)	69 (1,100)	75 (1,200)	66 (1,060)	53 (850)	23 (370)
Strength M_E psi(MPa)	11,922 (82)	17,730 (122)	19,173 (132)	17,259 (119)	7,498 (52)
Stiffness MOE 1000psi(MPa)	2,101 (14,490)	2,013 (13,880)	3,200 (22,070)	245 (16,950)	1,100 (7,584)
Janka Hardness Newton(lbf)	16,992 (3,820)	17,659 (3,970)	15,620 (3,510)	7,117 (1,600)	3,110 (700)
Shrinkage longitude % width % thickness %	0.02 0.40 1.90	0.06 1.20 3.70	0.16 5.90 7.20	0.17 5.50 10.10	0.20 2.40 5.00

5-3/8" RainClad Siding with tongue & groove end-match



7" RainClad Siding with tongue & groove end-match



END MATCH

All of our decking is end-matched for ease and improved quality of installation and to provide full coverage on or off the joist. Learn more at dassoXTR.com.

30 YEAR LIMITED WARRANTY

dasso.XTR products are manufactured using a patented process to ensure lasting outdoor beauty and enjoyment. Periodic recoating with XTR Guard is recommended to maintain its rich color. Please follow our maintenance instructions.

Visit dassoXTR.com for copies of our installation and maintenance instructions and warranties.